



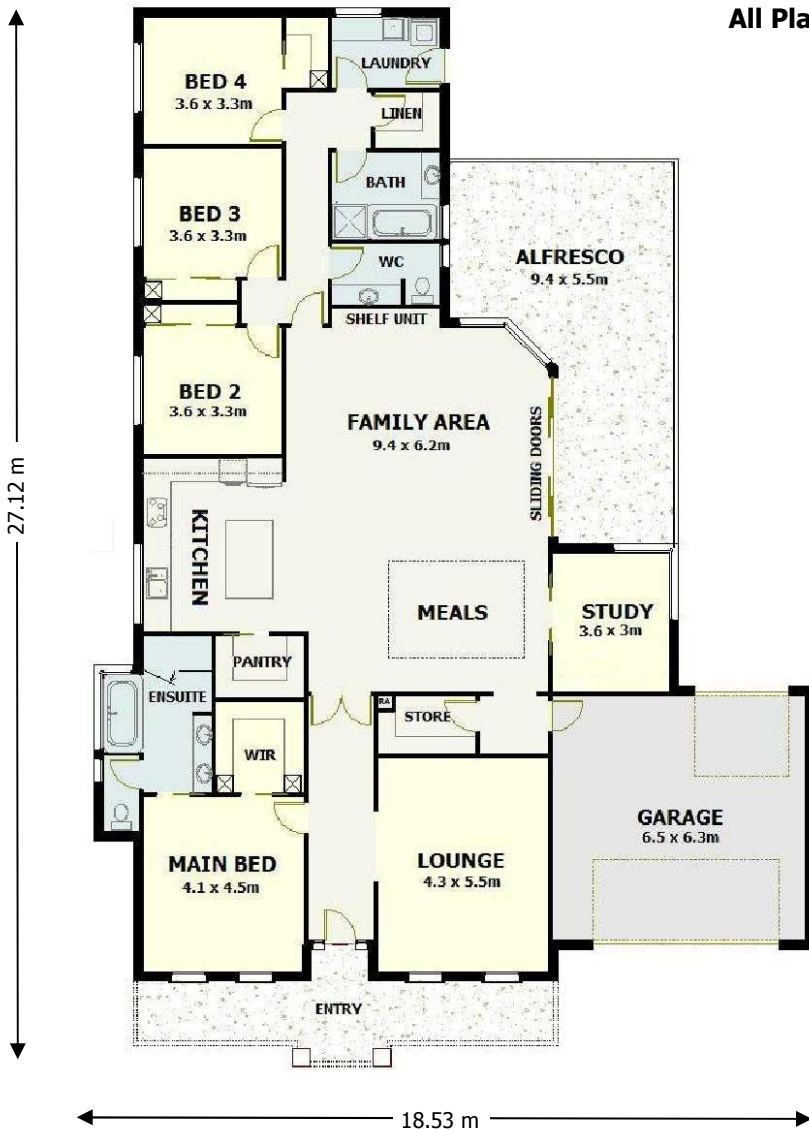
MONT ALBERT 264



*This represents one possible façade.
All facades will be customized
to individual preferences.*

**All designs and variations are
© Copyright 2009.**

All Plans can be altered at NO COST.



Plan Dimensions

Living Area	264.06 m ²	28.42 sqs
Entry / Verandah..	19.05 m ²	2.05 sqs
Alfresco	40.62 m ²	4.37 sqs
Garage	44.88 m ²	4.82 sqs
Total Area.....	368.61 m²	39.66 sqs

Width: 18.53 m Depth: 27.12 m

Features

- All connections.
- Four bedrooms PLUS study.
- Ensuite to main bedroom.
- WIR to main bedroom.
- Well appointed kitchen with island bench
- Large, separate lounge and family areas
- Ducted heating and air conditioning.
- All carpet and tiles
- Traditional verandah.
- Large double garage
- Huge alfresco